

Rotule SA BEM30-20-502-DURBAL - BEM30-20-502-DURBAL

<https://www.123roulement.ca/roulement-palier/rotule/sa/bem30-20-502-durbal>

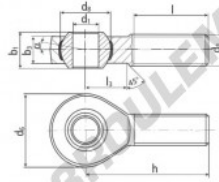
BEM30-20-502



male thread:
maintenance free,
adapter sizes
according to
DIN ISO 12240-4,
series K



**DURBAL® heavy-duty rod ends
with integral spherical
plain bearing**



rod end housing:
forged steel, tempered, rolled thread,
surface galvanized, free of Cr VI

joint ball:
ball bearing steel, hardened and ground,
surface superfinished and chromium
plated

race:
nylon / teflon / glass fibre compound

tolerances:
see page 10

| order number | | measurements [mm] | | weight | | basic load rating | |
|-------------------|------|-------------------|----------------|-------------------|------------------|-------------------|-----------------|
| type | type | d ₁ | d ₂ | d ₃ | d ₄ | b ₁ | b ₂ |
| BEM 30 -20 | -502 | 30 | M 30 x 2 | 70 | 50,75 | 37 | 25,0 |
| measurements [mm] | | weight | | basic load rating | | stat. | |
| type | h | l | l ₃ | α ₁ ° | α ₂ ° | C | C ₁₀ |
| BEM 30 | 110 | 66 | 35 | 17,0 | 10,5 | [kg] | [N] |
| | | | | | | | [N] |
| | | | | | | 1,015 | 55010 145600 |

CARACTÉRISTIQUES PRODUIT

| | |
|-----------------|-------------------|
| Marque | DURBAL |
| N° Ean13 | 3663952507965 |
| Diam. intérieur | 30 mm |
| Diam. extérieur | 70 mm |
| Épaisseur | 37 mm |
| Type | SA |
| Poids | 1015 g |
| Filetage | Filetage à gauche |
| Lubrification | sans |
| Conditionnement | 1 |

contact@123roulement.ca

+33 359 360 490

CRT4 de Lesquin 60 Rue Du Haut De Sainghin 59273 Fretin FRANCE