

Rotule TAPR GIHN-K-125LO-DURBAL - DGIHN-K-125LO-DURBAL

<https://www.123roulement.ca/roulement-palier/rotule/tapr/dgihn-k-125lo-durbal>

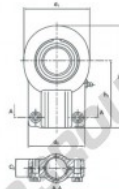
GIHN-K-125LO



Description: Hydraulic rod end with slot and clamping arrangement. Made of spherical plain bearing DGE. LO pressed into rod end housing. Sliding combination steel / steel with grease nipple.

* without grease nipple

female thread:
hydraulic rod ends,
according to
DIN 24338



Sliding combination:

steel / steel

Inner ring:
bearing steel, hardened, ground and
phosphated

Outer ring:
bearing steel, hardened, ground and
phosphated

Lubrication:
lubrication required

order number	d	d ₁	G	d ₂	B	C ₁	C ₂
GIHN-K 125 LO	125	260	M100 x 3	135,0	200	125	102

type	l ₁ min	measurement [mm]	l ₁	load rating	weight	
		h ₁	l ₂	C ₀ [kN]	[kg]	
GIHN-K / GIHN-KL 125 LO	113	260	405,0	120	1430,0	43,00

CARACTÉRISTIQUES PRODUIT

Marque	DURBAL
N° Ean13	3663952500577
Diam. intérieur	125 mm
Diam. extérieur	260 mm
Épaisseur	102 mm
Type	TAPR
Poids	43000 g
Filetage	Filetage à droite
Lubrification	avec
Conditionnement	1

contact@123roulement.ca

+33 359 360 490

CRT4 de Lesquin 60 Rue Du Haut De Sainghin 59273 Fretin FRANCE