

Rotule TAPR GIHN-K-80LO-DURBAL - GIHN-K-80LO-DURBAL

<https://www.123roulement.ca/roulement-palier/rotule/tapr/gihn-k-80lo-durbal>

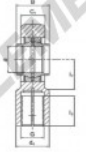
GIHN-K-80LO



Description: Hydraulic rod end with slot and clamping arrangement. Made of spherical plain bearing DGE. LO pressed into rod end housing. Sliding combination steel / steel with grease nipple.

* without grease nipple

female thread:
hydraulic rod ends,
according to
DIN 24338



Sliding combination:

steel / steel

Inner ring:
bearing steel, hardened, ground and
phosphated

Outer ring:
bearing steel, hardened, ground and
phosphated

Lubrication:
lubrication required

order number	d	d ₁	measurement [mm]	G	d ₂	B	C ₁	C ₂
GIHN-K 80 LO	80	168	M 64 x 3	90,0	148	80	66	48

type	l ₁ min	measurement [mm]	l ₂	l ₁	load rating C ₀ [kN]	weight [kg]
GIHN-K / GIHN-KL 80 LO	86	180	270,0	78	695,0	14,50

CARACTÉRISTIQUES PRODUIT

Marque	DURBAL
N° Ean13	3663952500416
Diam. intérieur	80 mm
Diam. intérieur	3.15" inch
Diam. extérieur	168 mm
Diam. extérieur	6.614" inch
Epaisseur	66 mm
Epaisseur	2.598" inch
Type	TAPR
Poids	14500 g
Filetage	Filetage à droite
Lubrification	avec
Conditionnement	1
Norme	Sans norme

contact@123roulement.ca

+33 359 360 490

CRT4 de Lesquin 60 Rue Du Haut De Sainghin 59273 Fretin FRANCE