

Rotule SI

SIL40-T-K-DURBAL - SIL40-T-K-DURBAL

<https://www.123roulement.ca/roulement-palier/rotule/si/sil40-t-k-durbal>

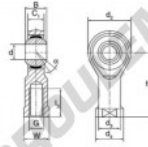
SIL40-T-K



female thread:
maintenance free,
according to
DIN ISO 12240-4,
series K



Description: DIN ISO rod end K series. Made of spherical plain bearing DG...PW pressed into rod end body. Sliding combination steel / bronze-PTFE composite.



Rod end body:
surface zinc plated

Sliding combination:
steel / bronze-PTFE composite

Inner ring:
bearing steel, hardened, ground and
spherical surface chromium plated

Outer ring:
brass body pressed around, outer race
lined with bronze-PTFE composite

Lubrication:
maintenance free

| order number | | measurement [mm] | | | | | | |
|-------------------|------------------|------------------|----------|----|----------------|----------------|----------------|----------------|
| right hand thread | left hand thread | d | G | B | C ₁ | d ₂ | d ₃ | d ₄ |
| | SIL 40 T/K | 40 | M 42 x 2 | 49 | 33,00 | 91 | 53,0 | 65 |

| type | measurement [mm] | | | load rating C ₀ [kN] | weight [kg] |
|-----------------|--------------------|----|-----|---------------------------------------|----------------|
| | l ₃ min | W | h | | |
| SI / SIL 40 T/K | 60 | 55 | 142 | 17 | 2,400 |

CARACTÉRISTIQUES PRODUIT

| | |
|-----------------|-------------------|
| Marque | DURBAL |
| N° Ean13 | 3663952489810 |
| Diam. intérieur | 40 mm |
| Diam. extérieur | 91 mm |
| Epaisseur | 49 mm |
| Type | SI |
| Poids | 2400 g |
| Filetage | Filetage à gauche |
| Lubrification | sans |
| Conditionnement | 1 |

contact@123roulement.ca

+33 359 360 490

CRT4 de Lesquin 60 Rue Du Haut De Sainghin 59273 Fretin FRANCE