

Rotule SI

SIL28-T-K-DURBAL - DSIL28-T-K-DURBAL

<https://www.123roulement.ca/roulement-palier/rotule/si/dsil28-t-k-durbal>

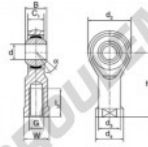
SIL28-T-K



female thread:
maintenance free,
according to
DIN ISO 12240-4,
series K



Description: DIN ISO rod end K series. Made of spherical plain bearing DG...PW pressed into rod end body. Sliding combination steel / bronze-PTFE composite.



Rod end body:
surface zinc plated

Sliding combination:
steel / bronze-PTFE composite

Inner ring:
bearing steel, hardened, ground and spherical surface chromium plated

Outer ring:
brass body pressed around, outer race lined with bronze-PTFE composite

Lubrication:
maintenance free

order number		measurement [mm]						
right hand thread	left hand thread	d	G	B	C ₁	d ₂	d ₃	d ₄
	SIL 28 T/K	28	M 27 x 2	35	24,00	66	37,0	46

type	measurement [mm]			load rating C ₁₀ [N]	weight [kg]
	l ₃ min	W	h		
SI / SIL 28 T/K	51	41	103	15	107,0

CARACTÉRISTIQUES PRODUIT

Marque	DURBAL
N° Ean13	3663952489650
Diam. intérieur	28 mm
Diam. extérieur	66 mm
Epaisseur	35 mm
Type	SI
Poids	820 g
Filetage	Filetage à gauche
Lubrification	sans
Conditionnement	1

contact@123roulement.ca

+33 359 360 490

CRT4 de Lesquin 60 Rue Du Haut De Sainghin 59273 Fretin FRANCE